

## HIGH PERFORMANCE WORM DRIVE CLAMPS



Premium POW'R-GEAR® and TRIMAX® clamps are designed for high vibration and stubborn leakage applications such as industrial machinery, heavy truck, farm and off-road equipment engines.

Featuring an extra wide 5/8" band and a wide profile housing that provides maximum engagement of screw threads to band, POW'R-GEAR® and TRIMAX® clamps are engineered to deliver exceptionally high rates of band tension to handle even the toughest sealing jobs.

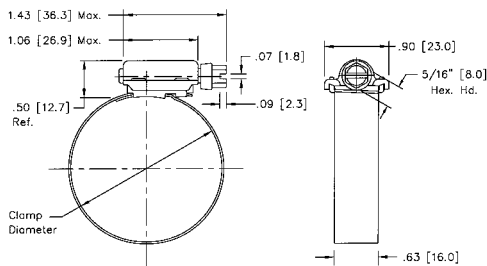
### Ideal POW'R-GEAR® 60 Series/Tridon TRIMAX® 850 Series

The premier clamp in the industry.

Screw: 5/16" hex-head. 410 stainless steel.  
 Band: 5/8" design. 0.028" thick. 300 grade stainless steel.  
 Housing: 0.060" thick. 300 grade stainless steel.

### Ideal 300 Grade Stainless Steel POW'R-GEAR® 6P Series (Tridon N/A)

All 300 grade stainless steel construction.  
 Screw: 5/16" hex-head. 305 stainless steel.  
 Band: 5/8" design. 0.028" thick. 300 grade stainless steel.  
 Housing: 0.060" thick. 300 grade stainless steel.



Measurements in illustrations are in inches (millimeters)

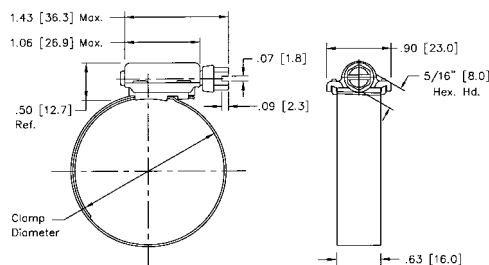
### Ideal Lined POW'R-GEAR® 6L Series Tridon TRIMAX® 843 Series

For maximum protection of soft hoses. Protective liner prevents extrusion and shearing of hose through band notches. Extended band design prevents liner from skewing during installation.

Screw: 5/16" hex-head. 410 stainless steel.  
 Band Liner: 5/8" design. 0.028" thick. 300 grade stainless steel.  
 Housing: 0.060" thick. 300 grade stainless steel.

### Ideal 300 Grade Stainless Steel Lined POW'R-GEAR® 6M Series (Tridon N/A)

All 300 grade stainless steel construction.  
 Screw: 5/16" hex-head. 305 stainless steel.  
 Band Liner: 5/8" design. 0.028" thick. 300 grade stainless steel.  
 Housing: 0.060" thick. 300 grade stainless steel.



N/A - Not Available



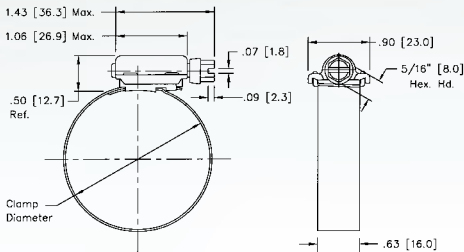
## Ideal Extended Range POW'R-GEAR® 6X Series (Tridon N/A)

Extra band notches allow greater opened and closed working diameters. Only five sizes cover clamping diameters from 1-1/4" to 10-1/8". Minimizes inventory investment without compromising application coverage.

Screw: 5/16" hex-head. 410 stainless steel.

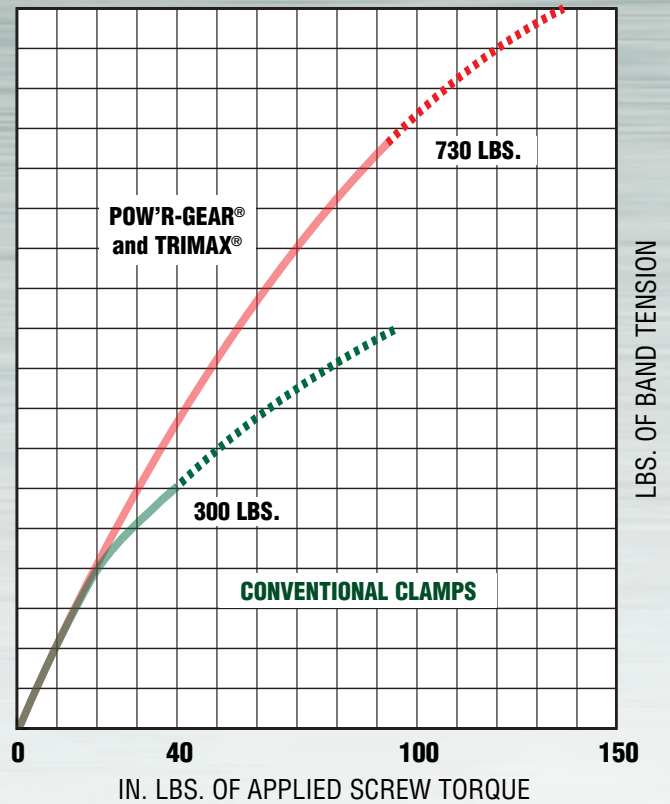
Band: 5/8" design. 0.028" thick. 300 grade stainless steel.

Housing: 0.060". thick. 300 grade stainless steel.



Measurements in illustrations are in inches [millimeters]

Also Available In  
**316**  
STAINLESS STEEL



*POW'R-GEAR® and TRIMAX® clamps deliver over 800 lbs. of band tension at 150 in. lbs. of screw torque. That's more than twice the band tension of conventional clamps.*

SAE Sizes	Ideal Part No.	English (in.)		Metric (mm)		Fits Hose I.D.	
		Min. Dia.	Max. Dia.	Min. Dia.	Max. Dia.	Min. (in.)	Max. (in.)
<b>6X</b>							
262	6X200	1 1/4	2 5/8	32	66	1 1/4	2
412	6X300	2	4 1/8	51	104	2	3 1/2
612	6X400	4	6 1/8	102	155	4	5 1/2
912	6X500	6	9 1/8	153	231	6	8 1/2
1012	6X600	7	10 1/8	178	257	7	9 1/2

SAE Sizes	Ideal Part No.	Tridon Part No.	HIGH PERFORMANCE CLAMP						CLAMPING RANGE						
			Ideal Part No.	Tridon Part No.	Ideal Part No.	Tridon Part No.	Ideal Part No.	Tridon Part No.	English (in.)		Metric (mm)		Fits Hose I.D.		
									Min. Dia.	Max. Dia.	Min. Dia.	Max. Dia.	Min. (in.)	Max. (in.)	
	<b>60</b>	<b>850</b>	<b>6P</b>	<b>N/A</b>	<b>6L</b>	<b>843</b>	<b>6M</b>	<b>N/A</b>							
175	60175	850-175	6P175	-	6L175	843-175	6M175	-	1	1 3/4	25	45	7/8	1 1/8	
212	60200	850-200	6P200	-	6L200	843-200	6M200	-	1 1/4	2 1/8	32	54	1	1 1/2	
262	60250	850-250	6P250	-	6L250	843-250	6M250	-	1 3/4	2 5/8	45	66	1 1/2	2	
312	60300	850-300	6P300	-	6L300	843-300	6M300	-	2 1/4	3 1/8	57	79	2	2 1/2	
362	60350	850-350	6P350	-	6L350	843-350	6M350	-	2 3/4	3 5/8	70	92	2 1/2	3	
412	60400	850-400	6P400	-	6L400	843-400	6M400	-	3 1/4	4 1/8	83	105	3	3 1/2	
462	60450	850-450	6P450	-	6L450	843-450	6M450	-	3 3/4	4 5/8	95	117	3 1/2	4	
512	60500	850-500	6P500	-	6L500	843-500	6M500	-	4 1/4	5 1/8	108	130	4	4 1/2	
562	60550	850-550	6P550	-	6L550	843-550	6M550	-	4 3/4	5 5/8	121	143	4 1/2	5	
612	60600	850-600	6P600	-	6L600	843-600	6M600	-	5 1/4	6 1/8	133	155	5	5 1/2	
662	60650	850-650	6P650	-	6L650	843-650	6M650	-	5 3/4	6 5/8	146	168	5 1/2	6	
712	60700	850-700	6P700	-	6L700	843-700	6M700	-	6 1/4	7 1/8	159	181	6	6 1/2	
762	60750	850-750	6P750	-	6L750	843-750	6M750	-	6 3/4	7 5/8	172	193	6 1/2	7	
812	60800	850-800	6P800	-	6L800	843-800	6M800	-	7 1/4	8 1/8	184	206	7	7 1/2	
862	60850	850-850	6P850	-	6L850	843-850	6M850	-	7 3/4	8 5/8	197	219	7 1/2	8	
912	60900	850-900	6P900	-	6L900	843-900	6M900	-	8 1/4	9 1/8	210	232	8	8 1/2	

Additional sizes available - Contact Ideal for information